



**Legende**

- A Außendurchmesser
- B Innendurchmesser
- C Gesamtlänge
- D größter Außendurchmesser
- D1 Innendurchmesser (Nutmutter)
- E (metrisches) Gewinde (M)
- SW Schlüsselweite

**Abmessungen**

DIN 11866-A (DIN 11850)  
 DIN 11866-B (EN ISO 1127)  
 auf Anfrage: DIN 11866-C (ASME BPE)

**Normative Verweisungen,**

**Anforderungen / Abnahmen (Vormaterial)**

- BN2
- EN 10088-1/-3
- EN 10204
- EN 10222-5 (Rohlinge)
- EN 10254 (Rohlinge)
- EN 10272
- ASTM A276
- ASTM A182/A182M / ASME SA182/SA182M
- ASTM A479/A479M / ASME SA479/SA479M
- ASME SA336 (Rohlinge)
- AD 2000-W2

**Kennzeichnung**

Hersteller, Werkstoff, Abmessung, Schmelze,  
 STERI-Connect®

**Toleranzen (Bezugsnorm)**

ISO 2768-1

**Verpackung**

Schweißenden mit Kunststoffkappen verschlossen,  
 einzeln verpackt.

**Werkstoffe**

- 1.4435 (mediumberührt)
- 1.4301/07 (nicht mediumberührt)
- EPDM (Standard)

**weitere Werkstoffe auf Anfrage**

**Oberflächenbeschaffenheit ("MB")**

innen: feinstgedreht, Ra < 0.8 µm  
 außen: feingedreht, Ra < 1.6 µm

**Key**

- external diameter
- internal diameter
- total length
- biggest external diameter
- internal diameter (nut)
- (metric) thread (M)
- width across flats (A/F)

**Dimensions**

DIN 11866-A (DIN 11850)  
 DIN 11866-B (EN ISO 1127)  
 on request: DIN 11866-C (ASME BPE)

**Normative References,**

**Requirements / Approvals (raw material)**

- BN2
- EN 10088-1/-3
- EN 10204
- EN 10222-5 (forgings)
- EN 10254 (forgings)
- EN 10272
- ASTM A276
- ASTM A182/A182M / ASME SA182/SA182M
- ASTM A479/A479M / ASME SA479/SA479M
- ASME SA336 (forgings)
- AD 2000-W2

**Marking**

manufacturer, material, dimension, heat,  
 STERI-Connect®

**Tolerances (reference standard)**

ISO 2768-1

**Packaging**

Welding ends covered with plastic caps,  
 wrapped separately.

**Materials**

- 316L (at medium contact surface)
- 304 (not at medium contact surface)
- EPDM (standard)

**further materials on request**

**Surface condition ("MB")**

inside: ultra-fine turned, Ra < 0.8 µm  
 outside: refined turned, Ra < 1.6 µm



**Oberflächenqualitäten | surface qualities**

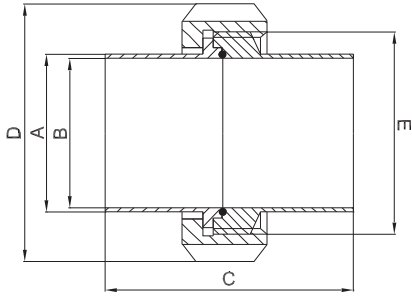
Innenoberfläche internal surface finish	(Zusatz-) Artikel-Nr. (additional) order No
e-poliert   e-polished	999277
Ra < 0.6 µm (STERI-line®)	999279
Ra < 0.5 µm (STERI-line®)	999280
Ra < 0.4 µm (HQ-line®)	999281
Ra < 0.25 µm (HQ-line®)	999283

**Bestellbeispiel | ordering example**

Artikelbezeichnung + Ausführungen article description + variants	Artikel-Nr. order No
Steril-Verschraubung STERI Connect® DN025 ISO aseptic screwed pipe connection (1.4435, EPDM)	700317
e-poliert   e-polished	+ 999277
Ra < 0.25 µm	+ 999283



Zubehör ab Seite 73 | accessories from page 73 on



weitere Abmessungen auf Anfrage | further dimensions on request

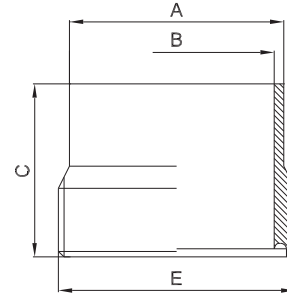
DIN	Abmessung dimension	A	B	C	D	E (M)	MB 1.4435			
DN006	8.0 x 1.0	8.0	6.0	67.0	SW19	16 x 1.5	705207			
DN008	10.0 x 1.0	10.0	8.0	67.0	SW22	18 x 1.5	705206			
DN010	12.0 x 1.0	12.0	10.0	68.0	SW27	22 x 1.5	700307			
DN010	13.0 x 1.5	13.0	10.0	68.0	SW27	22 x 1.5	709783			
DN015	19.0 x 1.5	19.0	16.0	68.0	42.0	30 x 1.5	700311			
DN020	23.0 x 1.5	23.0	20.0	70.0	48.0	36 x 2.0	700313			
DN025	29.0 x 1.5	29.0	26.0	81.0	55.0	42 x 2.0	700315			
DN032	35.0 x 1.5	35.0	32.0	82.0	65.0	52 x 2.0	700318			
DN040	41.0 x 1.5	41.0	38.0	83.0	70.0	56 x 2.0	700320			
DN050	53.0 x 1.5	53.0	50.0	84.0	82.0	68 x 2.0	700322			
DN065	70.0 x 2.0	70.0	66.0	112.0	105.0	90 x 3.0	700325			
DN080	85.0 x 2.0	85.0	81.0	112.0	115.0	100 x 3.0	700328			
DN100	104.0 x 2.0	104.0	100.0	114.0	145.0	130 x 4.0	700309			

ISO	Abmessung dimension	A	B	C	D	E (M)	MB 1.4435			
DN008	13.5 x 1.6	13.5	10.3	67.0	SW27	22 x 1.5	700327			
DN010	17.2 x 1.6	17.2	14.0	68.0	SW30	26 x 1.5	700308			
DN015	21.3 x 1.6	21.3	18.1	68.0	42.0	30 x 1.5	700312			
DN020	26.9 x 1.6	26.9	23.7	70.0	48.0	36 x 2.0	700314			
DN025	33.7 x 2.0	33.7	29.7	81.0	55.0	42 x 2.0	700317			
DN032	42.4 x 2.0	42.4	38.4	82.0	65.0	52 x 2.0	700319			
DN040	48.3 x 2.0	48.3	44.3	83.0	70.0	56 x 2.0	700321			
DN050	60.3 x 2.0	60.3	56.3	84.0	82.0	68 x 2.0	700323			
DN065	76.1 x 2.0	76.1	72.1	112.0	105.0	90 x 3.0	700326			
DN080	88.9 x 2.3	88.9	84.3	112.0	115.0	100 x 3.0	700329			
DN100	114.3 x 2.3	114.3	109.7	114.0	145.0	130 x 4.0	700310			



## 2.1.2 Steril-Gewindestutzen STERI-Connect®

aseptic threaded connecting piece (male part)



zusätzliche Oberflächenqualitäten analog Seite | additional surface qualities analog page 7

weitere Abmessungen auf Anfrage | further dimensions on request

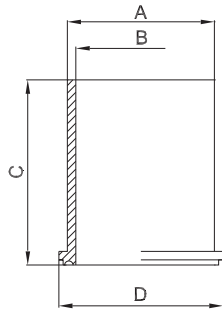
DIN	Abmessung dimension	A	B	C	E (M)	MB 1.4435			
DN006	8.0 x 1.0	8.0	6.0	36.0	16 x 1.5	705205			
DN008	10.0 x 1.0	10.0	8.0	36.0	18 x 1.5	704503			
DN010	12.0 x 1.0	12.0	10.0	37.0	22 x 1.5	700059			
DN010	13.0 x 1.5	13.0	10.0	37.0	22 x 1.5	709523			
DN015	19.0 x 1.5	19.0	16.0	37.0	30 x 1.5	703799			
DN020	23.0 x 1.5	23.0	20.0	39.0	36 x 2.0	700064			
DN025	29.0 x 1.5	29.0	26.0	44.0	42 x 2.0	700066			
DN032	35.0 x 1.5	35.0	32.0	45.0	52 x 2.0	700068			
DN040	41.0 x 1.5	41.0	38.0	46.0	56 x 2.0	700070			
DN050	53.0 x 1.5	53.0	50.0	47.0	68 x 2.0	700072			
DN065	70.0 x 2.0	70.0	66.0	64.0	90 x 3.0	700075			
DN080	85.0 x 2.0	85.0	81.0	64.0	100 x 3.0	700078			
DN100	104.0 x 2.0	104.0	100.0	66.0	130 x 4.0	700061			

ISO	Abmessung dimension	A	B	C	E (M)	MB 1.4435			
DN008	13.5 x 1.6	13.5	10.3	37.0	22 x 1.5	700077			
DN010	17.2 x 1.6	17.2	14.0	37.0	26 x 1.5	700060			
DN015	21.3 x 1.6	21.3	18.1	37.0	30 x 1.5	700063			
DN020	26.9 x 1.6	26.9	23.7	39.0	36 x 2.0	700065			
DN025	33.7 x 2.0	33.7	29.7	44.0	42 x 2.0	700067			
DN032	42.4 x 2.0	42.4	38.4	45.0	52 x 2.0	700069			
DN040	48.3 x 2.0	48.3	44.3	46.0	56 x 2.0	700071			
DN050	60.3 x 2.0	60.3	56.3	47.0	68 x 2.0	700073			
DN065	76.1 x 2.0	76.1	72.1	64.0	90 x 3.0	700076			
DN080	88.9 x 2.3	88.9	84.3	64.0	100 x 3.0	700079			
DN100	114.3 x 2.3	114.3	109.7	66.0	130 x 4.0	700062			



## 2.1.3 Steril-Bundstutzen STERI-Connect®

aseptic liner



weitere Abmessungen auf Anfrage | further dimensions on request

zusätzliche Oberflächenqualitäten analog Seite | additional surface qualities analog page 7

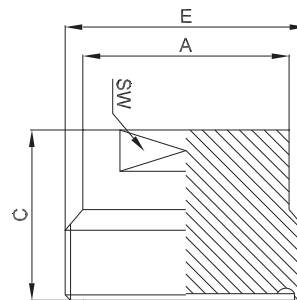
DIN	Abmessung dimension	A	B	C	D	MB 1.4435			
DN006	8.0 x 1.0	8.0	6.0	33.0	13.0	705204			
DN008	10.0 x 1.0	10.0	8.0	33.0	15.0	700033			
DN010	12.0 x 1.0	12.0	10.0	33.0	19.0	700102			
DN010	13.0 x 1.5	13.0	10.0	33.0	19.0	709767			
DN015	19.0 x 1.5	19.0	16.0	33.0	27.0	700104			
DN020	23.0 x 1.5	23.0	20.0	33.0	33.0	700105			
DN025	29.0 x 1.5	29.0	26.0	39.0	39.0	700106			
DN032	35.0 x 1.5	35.0	32.0	39.0	49.0	700107			
DN040	41.0 x 1.5	41.0	38.0	39.0	53.0	700108			
DN050	53.0 x 1.5	53.0	50.0	39.0	65.0	700109			
DN065	70.0 x 2.0	70.0	66.0	50.0	85.0	700110			
DN080	85.0 x 2.0	85.0	81.0	50.0	95.0	700111			
DN100	104.0 x 2.0	104.0	100.0	50.0	124.0	700103			

ISO	Abmessung dimension	A	B	C	D	MB 1.4435			
DN008	13.5 x 1.6	13.5	10.3	33.0	19.0	700035			
DN010	17.2 x 1.6	17.2	14.0	33.0	23.0	700025			
DN015	21.3 x 1.6	21.3	18.1	33.0	27.0	700027			
DN020	26.9 x 1.6	26.9	23.7	33.0	33.0	700028			
DN025	33.7 x 2.0	33.7	29.7	39.0	39.0	700029			
DN032	42.4 x 2.0	42.4	38.4	39.0	49.0	700030			
DN040	48.3 x 2.0	48.3	44.3	39.0	53.0	702499			
DN050	60.3 x 2.0	60.3	56.3	39.0	65.0	700032			
DN065	76.1 x 2.0	76.1	72.1	50.0	85.0	700034			
DN080	88.9 x 2.3	88.9	84.3	50.0	95.0	700036			
DN100	114.3 x 2.3	114.3	109.7	50.0	124.0	700026			



## 2.1.4 Steril-Blindgewindestutzen STERI-Connect®

aseptic blind threaded connecting piece (male part)



zusätzliche Oberflächenqualitäten analog Seite | additional surface qualities analog page 7

weitere Abmessungen auf Anfrage | further dimensions on request

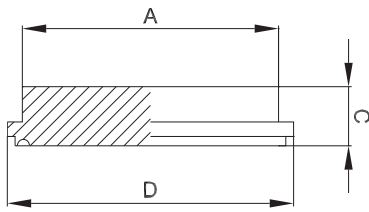
DIN	Abmessung dimension	A	C	E (M)	SW	MB 1.4435			
DN006	8.0 x 1.0	8.0	26.0	16 x 1.5	10.0	700018			
DN008	10.0 x 1.0	10.0	26.0	18 x 1.5	10.0	700020			
DN010	12.0 x 1.0	12.0	27.0	22 x 1.5	14.0	700022			
DN010	13.0 x 1.5	13.0	27.0	22 x 1.5	14.0	709836			
DN015	19.0 x 1.5	19.0	27.0	30 x 1.5	16.0	700011			
DN020	23.0 x 1.5	23.0	27.0	36 x 2.0	20.0	700012			
DN025	29.0 x 1.5	29.0	27.0	42 x 2.0	24.0	700013			
DN032	35.0 x 1.5	35.0	29.0	52 x 2.0	30.0	700015			
DN040	41.0 x 1.5	41.0	30.0	56 x 2.0	36.0	700016			
DN050	53.0 x 1.5	53.0	30.0	68 x 2.0	36.0	700017			
DN065	70.0 x 2.0	70.0	38.0	90 x 3.0	36.0	700019			
DN080	85.0 x 2.0	85.0	38.0	100 x 3.0	36.0	700021			
DN100	104.0 x 2.0	104.0	40.0	130 x 4.0	36.0	700010			

ISO	Abmessung dimension	A	C	E (M)	SW	MB 1.4435			
DN008	13.5 x 1.6	13.5	27.0	22 x 1.5	10.0	700024			
DN010	17.2 x 1.6	17.2	27.0	26 x 1.5	14.0	700009			
DN015	21.3 x 1.6	21.3	26.0	30 x 1.5	16.0	703794			
DN020	26.9 x 1.6	26.9	28.0	36 x 2.0	20.0	703116			
DN025	33.7 x 2.0	33.7	29.0	42 x 2.0	24.0	703117			
DN032	42.4 x 2.0	42.4	30.0	52 x 2.0	30.0	703121			
DN040	48.3 x 2.0	48.3	30.0	56 x 2.0	36.0	703119			
DN050	60.3 x 2.0	60.3	31.0	68 x 2.0	36.0	703118			
DN065	76.1 x 2.0	76.1	38.0	90 x 3.0	36.0	703120			
DN080	88.9 x 2.3	88.9	38.0	100 x 3.0	36.0	703115			
DN100	114.3 x 2.3	114.3	40.0	130 x 4.0	36.0	703114			



## 2.1.5 Steril-Blindbundstutzen STERI-Connect®

aseptic blind liner



weitere Abmessungen auf Anfrage | further dimensions on request

zusätzliche Oberflächenqualitäten analog Seite | additional surface qualities analog page 7

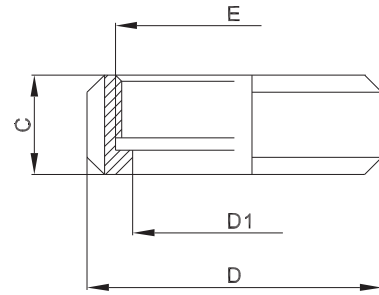
DIN	Abmessung dimension	A	C	D			MB 1.4435			
DN006	8.0 x 1.0	8.0	9.0	13.0			705215			
DN008	10.0 x 1.0	10.0	9.0	15.0			705216			
DN010	12.0 x 1.0	12.0	9.0	19.0			700080			
DN010	13.0 x 1.5	13.0	9.0	19.0			709837			
DN015	19.0 x 1.5	19.0	9.0	27.0			700084			
DN020	23.0 x 1.5	23.0	9.0	33.0			700086			
DN025	29.0 x 1.5	29.0	10.0	39.0			700088			
DN032	35.0 x 1.5	35.0	10.0	49.0			700090			
DN040	41.0 x 1.5	41.0	10.0	53.0			700092			
DN050	53.0 x 1.5	53.0	10.0	65.0			700094			
DN065	70.0 x 2.0	70.0	11.0	85.0			700097			
DN080	85.0 x 2.0	85.0	11.0	95.0			700100			
DN100	104.0 x 2.0	104.0	11.0	124.0			700082			

ISO	Abmessung dimension	A	C	D			MB 1.4435			
DN008	13.5 x 1.6	13.5	9.0	19.0			700099			
DN010	17.2 x 1.6	17.2	9.0	23.0			700081			
DN015	21.3 x 1.6	21.3	9.0	27.0			700085			
DN020	26.9 x 1.6	26.9	9.0	33.0			700087			
DN025	33.7 x 2.0	33.7	10.0	39.0			700089			
DN032	42.4 x 2.0	42.4	10.0	49.0			700091			
DN040	48.3 x 2.0	48.3	10.0	53.0			700093			
DN050	60.3 x 2.0	60.3	10.0	65.0			700095			
DN065	76.1 x 2.0	76.1	11.0	85.0			700098			
DN080	88.9 x 2.3	88.9	11.0	95.0			700101			
DN100	114.3 x 2.3	114.3	11.0	124.0			700083			



## 2.1.6 Steril-Nutmutter STERI-Connect®

aseptic nut



weitere Abmessungen auf Anfrage | further dimensions on request

DIN	Abmessung dimension	C	D	D1	E (M)		1.4301/07 304			
DN006	8.0 x 1.0	14.0	SW19	8.5	16 x 1.5		705213			
DN008	10.0 x 1.0	14.0	SW22	10.5	18 x 1.5		705212			
DN010	12.0 x 1.0	15.0	SW27	12.5	22 x 1.5		700260			
DN010	13.0 x 1.5	15.0	SW27	13.5	22 x 1.5		709957			
DN015	19.0 x 1.5	15.5	42.0	19.5	30 x 1.5		700264			
DN020	23.0 x 1.5	17.0	48.0	23.5	36 x 2.0		700266			
DN025	29.0 x 1.5	18.0	55.0	29.5	42 x 2.0		700268			
DN032	35.0 x 1.5	19.0	65.0	35.5	52 x 2.0		700270			
DN040	41.0 x 1.5	21.0	70.0	41.5	56 x 2.0		700272			
DN050	53.0 x 1.5	21.0	82.0	53.5	68 x 2.0		700274			
DN065	70.0 x 2.0	27.0	105.0	70.5	90 x 3.0		700277			
DN080	85.0 x 2.0	27.0	115.0	85.5	100 x 3.0		700280			
DN100	104.0 x 2.0	29.0	145.0	104.5	130 x 4.0		700262			

ISO	Abmessung dimension	C	D	D1	E (M)		1.4301/07 304			
DN008	13.5 x 1.6	15.0	SW27	14.0	22 x 1.5		700279			
DN010	17.2 x 1.6	15.5	SW30	17.7	26 x 1.5		700261			
DN015	21.3 x 1.6	15.5	42.0	21.8	30 x 1.5		700265			
DN020	26.9 x 1.6	17.0	48.0	27.4	36 x 2.0		700267			
DN025	33.7 x 2.0	18.0	55.0	34.2	42 x 2.0		700269			
DN032	42.4 x 2.0	19.0	65.0	42.9	52 x 2.0		700271			
DN040	48.3 x 2.0	21.0	70.0	48.8	56 x 2.0		700273			
DN050	60.3 x 2.0	21.0	82.0	60.8	68 x 2.0		700275			
DN065	76.1 x 2.0	27.0	105.0	76.6	90 x 3.0		700278			
DN080	88.9 x 2.3	27.0	115.0	89.4	100 x 3.0		700281			
DN100	114.3 x 2.3	29.0	145.0	114.8	130 x 4.0		700263			