



## 2.10 STERI-Cap®

Rohrendkappe mit Orbitalschweißende

end cap for tubes with orbital welding end

### Legende

- A Außendurchmesser
- B Innendurchmesser
- C Gesamtlänge

### Abmessungen

- DIN 11866-A (DIN 11850)
- DIN 11866-B (EN ISO 1127)
- DIN 11866-C (ASME BPE)

### Normative Verweisungen, Anforderungen / Abnahmen (Vormaterial)

- BN2
- EN 10088-1/-3
- EN 10204
- EN 10272
- ASTM A276
- ASTM A182/A182M / ASME SA182/SA182M
- ASTM A479/A479M / ASME SA479/SA479M
- AD 2000-W2

### Kennzeichnung

Hersteller, Werkstoff, Abmessung, Schmelze

### Toleranzen (Bezugsnorm)

ISO 2768-1

### Verpackung

Schweißende mit Kunststoffkappe verschlossen, einzeln verpackt.

### Werkstoffe

1.4435

### weitere Werkstoffe auf Anfrage

### Oberflächenbeschaffenheit ("MB")

innen: feinstgedreht, Ra < 0.8 µm  
 außen: feingedreht, Ra < 1.6 µm

### Key

- external diameter
- internal diameter
- total length

### Dimensions

- DIN 11866-A (DIN 11850)
- DIN 11866-B (EN ISO 1127)
- DIN 11866-C (ASME BPE)

### Normative References, Requirements / Approvals (raw material)

- BN2
- EN 10088-1/-3
- EN 10204
- EN 10272
- ASTM A276
- ASTM A182/A182M / ASME SA182/SA182M
- ASTM A479/A479M / ASME SA479/SA479M
- AD 2000-W2

### Marking

manufacturer, material, dimension, heat

### Tolerances (reference standard)

ISO 2768-1

### Packaging

Welding end covered with plastic cap, wrapped separately.

### Materials

316L

### further materials on request

### Surface condition ("MB")

inside: ultra-fine turned, Ra < 0.8 µm  
 outside: refined turned, Ra < 1.6 µm

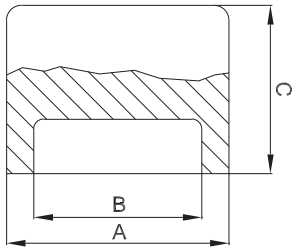


### Oberflächenqualitäten | surface qualities

Innenoberfläche internal surface finish	(Zusatz-) Artikel-Nr. (additional) order No
e-poliert   e-polished	999277
Ra < 0.6 µm (STERI-line®)	999279
Ra < 0.5 µm (STERI-line®)	999280
Ra < 0.4 µm (HQ-line®)	999281
Ra < 0.25 µm (HQ-line®)	999283

### Bestellbeispiel | ordering example

Artikelbezeichnung + Ausführungen article description + variants	Artikel-Nr. order No
STERI-Cap® DN025 ISO (1.4435) end cap for tubes	704117
e-poliert   e-polished	+ 999277
Ra < 0.6 µm	+ 999279



weitere Abmessungen auf Anfrage | further dimensions on request

DIN	Abmessung dimension	A	B	C	MB 1.4435
DN006	8.0 x 1.0	8.0	6.0	25.0	704129
DN008	10.0 x 1.0	10.0	8.0	25.0	704130
DN010	12.0 x 1.0	12.0	10.0	25.0	704131
DN010	13.0 x 1.5	13.0	10.0	25.0	705398
DN015	19.0 x 1.5	19.0	16.0	25.0	704132
DN020	23.0 x 1.5	23.0	20.0	26.0	704021
DN025	29.0 x 1.5	29.0	26.0	30.0	704133
DN032	35.0 x 1.5	35.0	32.0	30.0	704022
DN040	41.0 x 1.5	41.0	38.0	31.0	704134
DN050	53.0 x 1.5	53.0	50.0	31.0	704135
DN065	70.0 x 2.0	70.0	66.0	41.0	704136
DN080	85.0 x 2.0	85.0	81.0	41.0	704137
DN100	104.0 x 2.0	104.0	100.0	41.0	703203
DN125	129.0 x 2.0	129.0	125.0	41.0	704138
DN150	154.0 x 2.0	154.0	150.0	41.0	704139

ISO	Abmessung dimension	A	B	C	MB 1.4435
DN008	13.5 x 1.6	13.5	10.3	25.0	704140
DN010	17.2 x 1.6	17.2	14.0	25.0	704141
DN015	21.3 x 1.6	21.3	18.1	25.0	704142
DN020	26.9 x 1.6	26.9	23.7	25.0	703995
DN025	33.7 x 2.0	33.7	29.7	30.0	704117
DN032	42.4 x 2.0	42.4	38.4	30.0	704143
DN040	48.3 x 2.0	48.3	44.3	25.0	704144
DN050	60.3 x 2.0	60.3	56.3	31.0	704118
DN065	76.1 x 2.0	76.1	72.1	41.0	704145
DN080	88.9 x 2.3	88.9	84.3	41.0	704146
DN100	114.3 x 2.3	114.3	109.7	41.0	703913
DN125	139.7 x 2.6	139.7	134.5	41.0	704114
DN150	168.3 x 2.6	168.3	163.1	41.0	703967

ASME BPE	Abmessung dimension	A	B	C	MB 1.4435
DN ½"	12.7 x 1.65	12.7	9.4	38.1	705328
DN ¾"	19.05 x 1.65	19.05	15.75	38.1	705329
DN 1"	25.4 x 1.65	25.4	22.1	38.1	705330
DN 1½"	38.1 x 1.65	38.1	34.8	38.1	705331
DN 2"	50.8 x 1.65	50.8	47.5	38.1	705332
DN 2½"	63.5 x 1.65	63.5	60.2	38.1	705333
DN 3"	76.2 x 1.65	76.2	72.9	44.5	705334
DN 4"	101.6 x 2.11	101.6	97.38	50.8	705335

Klöpferböden nach DIN 28011 sind ebenfalls ab Lager lieferbar  
Torispherical heads acc. to DIN 28011 are also available from stock