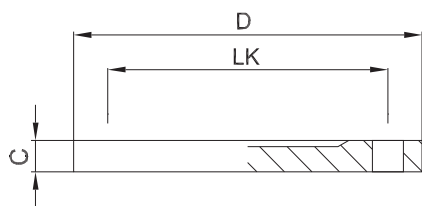




## 2.4.5 Blindbundflansch DIN 11864-2-A/DIN 11853-2

blind flange with collar



zusätzliche Oberflächenqualitäten analog Seite | additional surface qualities analog page 31

weitere Abmessungen auf Anfrage | further dimensions on request

DIN	Abmessung dimension	C	D	LK			MB 1.4435	e-pol. 1.4435	MB 1.4404	e-pol. 1.4404
DN010	13.0 x 1.5	10.0	54.0	37.0			703587	709663	705399	709638
DN015	19.0 x 1.5	10.0	59.0	42.0			703588	709664	705400	709639
DN020	23.0 x 1.5	10.0	64.0	47.0			703589	709665	705401	709640
DN025	29.0 x 1.5	10.0	70.0	53.0			703590	709666	704988	709641
DN032	35.0 x 1.5	10.0	76.0	59.0			703591	709667	704989	709642
DN040	41.0 x 1.5	10.0	82.0	65.0			703592	709668	705402	709643
DN050	53.0 x 1.5	10.0	94.0	77.0			703593	709669	705403	709644
DN065	70.0 x 2.0	10.0	113.0	95.0			703594	709670	705404	709645
DN080	85.0 x 2.0	12.0	133.0	112.0			703595	709671	705405	709646
DN100	104.0 x 2.0	14.0	159.0	137.0			703596	709672	705406	709647
DN125	129.0 x 2.0	14.0	183.0	161.0			706266	709673	705407	709648
DN150	154.0 x 2.0	16.0	213.0	188.0			706267	709674	705408	709649
DN200*	204.0 x 2.0	25.0	340.0	295.0			**	**	**	**
DN250*	254.0 x 2.0	25.0	405.0	355.0			**	**	**	**
DN300*	304.0 x 2.0	28.0	460.0	410.0			**	**	**	**

ISO	Abmessung dimension	C	D	LK			MB 1.4435	e-pol. 1.4435	MB 1.4404	e-pol. 1.4404
DN008	13.5 x 1.6	10.0	54.0	37.0			704665	709369	709788	709792
DN010	17.2 x 1.6	10.0	59.0	42.0			704666	709370	709789	709793
DN015	21.3 x 1.6	10.0	62.0	45.0			704667	709371	705409	709391
DN020	26.9 x 1.6	10.0	69.0	52.0			704668	709372	705410	709392
DN025	33.7 x 2.0	10.0	74.0	57.0			704669	709373	705411	709393
DN032	42.4 x 2.0	10.0	82.0	65.0			704670	709374	705412	709394
DN040	48.3 x 2.0	10.0	88.0	71.0			704671	709375	705413	709395
DN050	60.3 x 2.0	10.0	103.0	85.0			704672	709376	705414	709396
DN065	76.1 x 2.0	12.0	125.0	104.0			704673	709377	705415	709397
DN080	88.9 x 2.3	12.0	137.0	116.0			704674	709378	705416	709398
DN100	114.3 x 2.3	14.0	168.0	146.0			704675	709379	705417	709399
DN125*	139.7 x 2.6	23.0	250.0	210.0			**	**	**	**
DN150*	168.3 x 2.6	23.0	285.0	240.0			**	**	**	**
DN200*	219.1 x 2.6	25.0	340.0	295.0			**	**	**	**
DN250*	273.0 x 3.0	25.0	405.0	355.0			**	**	**	**
DN300*	323.9 x 3.0	28.0	460.0	410.0			**	**	**	**

ASME BPE	Abmessung dimension	C	D	LK			MB 1.4435	e-pol. 1.4435	MB 1.4404	e-pol. 1.4404
DN 1/2"	12.7 x 1.65	10.0	54.0	37.0			704676	710267	709778	710275
DN 3/4"	19.05 x 1.65	10.0	59.0	42.0			704677	710268	709779	710276
DN 1"	25.4 x 1.65	10.0	66.0	49.0			704678	710269	705419	710277
DN 1 1/2"	38.1 x 1.65	10.0	79.0	62.0			704679	710270	705420	710278
DN 2"	50.8 x 1.65	10.0	92.0	75.0			704680	710271	705421	710279
DN 2 1/2"	63.5 x 1.65	10.0	107.0	89.0			704681	710272	705423	710280
DN 3"	76.2 x 1.65	12.0	125.0	104.0			704682	710273	705424	710281
DN 4"	101.6 x 2.11	14.0	157.0	135.0			704683	710274	705425	710282

\*) nicht in der DIN-Norm enthalten | non-standard

\*\*\*) auf Anfrage | on request