

**Legende**

- A Außendurchmesser  
 B Innendurchmesser  
 C Gesamtlänge  
 E (Clamp-) Flansch-Außendurchmesser

**Abmessungen**

DIN 11866-A (DIN 11850)  
 DIN 11866-B (EN ISO 1127)  
 auf Anfrage: DIN 11866-C (ASME BPE)

**Normative Verweisungen,****Anforderungen / Abnahmen (Vormaterial)**

BN2  
 EN 10088-1/-3  
 EN 10204  
 EN 10222-5 (Rohlinge)  
 EN 10254 (Rohlinge)  
 EN 10272  
 ASTM A276  
 ASTM A182/A182M / ASME SA182/SA182M  
 ASTM A479/A479M / ASME SA479/SA479M  
 ASME SA336 (Rohlinge)  
 AD 2000-W2

**Kennzeichnung**

Hersteller, Werkstoff, Abmessung, Schmelze,  
 STERI-Connect®

**Toleranzen (Bezugsnorm)**

ISO 2768-1

**Verpackung**

Schweißenden mit Kunststoffkappen verschlossen,  
 einzeln verpackt.

**Werkstoffe**

1.4435 (mediumberührt)  
 1.4301/08 (nicht mediumberührt)  
 EPDM (Standard)

**weitere Werkstoffe auf Anfrage****Oberflächenbeschaffenheit ("MB")**

innen: feinstgedreht, Ra < 0.8 µm  
 außen: feingedreht, Ra < 1.6 µm

**Key**

external diameter  
 internal diameter  
 total length  
 outer (clamp) flange diameter

**Dimensions**

DIN 11866-A (DIN 11850)  
 DIN 11866-B (EN ISO 1127)  
 on request: DIN 11866-C (ASME BPE)

**Normative References,****Requirements / Approvals (raw material)**

BN2  
 EN 10088-1/-3  
 EN 10204  
 EN 10222-5 (forgings)  
 EN 10254 (forgings)  
 EN 10272  
 ASTM A276  
 ASTM A182/A182M / ASME SA182/SA182M  
 ASTM A479/A479M / ASME SA479/SA479M  
 ASME SA336 (forgings)  
 AD 2000-W2

**Marking**

manufacturer, material, dimension, heat,  
 STERI-Connect®

**Tolerances (reference standard)**

ISO 2768-1

**Packaging**

Welding ends covered with plastic caps,  
 wrapped separately.

**Materials**

316L (at medium contact surface)  
 304 (not at medium contact surface)  
 EPDM (standard)

**further materials on request****Surface condition ("MB")**

inside: ultra-fine turned, Ra < 0.8 µm  
 outside: refined turned, Ra < 1.6 µm

**Oberflächenqualitäten | surface qualities**

Innenoberfläche internal surface finish	(Zusatz-) Artikel-Nr. (additional) order No
e-poliert   e-polished	999277
Ra < 0.6 µm (STERI-line®)	999279
Ra < 0.5 µm (STERI-line®)	999280
Ra < 0.4 µm (HQ-line®)	999281
Ra < 0.25 µm (HQ-line®)	999283

**Bestellbeispiel | ordering example**

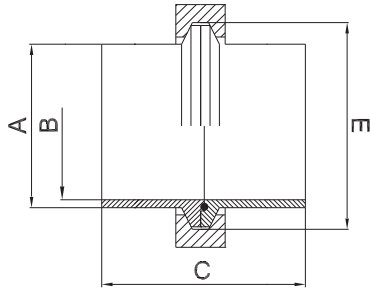
Artikelbezeichnung + Ausführungen article description + variants	Artikel-Nr. order No
Steril-Clampverbindung DN025 ISO (1.4435, EPDM) aseptic clamp connection STERI-Connect®	700211
e-poliert   e-polished	+ 999277
Ra < 0.6 µm	+ 999279



Zubehör ab Seite 73 | accessories from page 73 on



## 2.5.1 Steril-Clampverbindung STERI-Connect®



weitere Abmessungen auf Anfrage | further dimensions on request

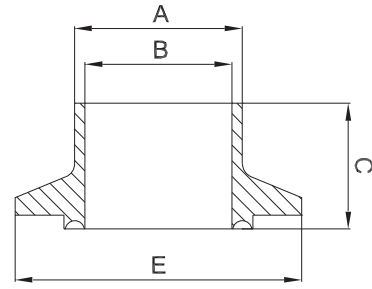
DIN	Abmessung dimension	A	B	C	E	MB 1.4435			
DN006	8.0 x 1.0	8.0	6.0	68.0	Ø 25.0	705243			
DN008	10.0 x 1.0	10.0	8.0	68.0	Ø 25.0	700218			
DN010	12.0 x 1.0	12.0	10.0	68.0	Ø 25.0	700202			
DN010	13.0 x 1.5	13.0	10.0	68.0	Ø 25.0	709785			
DN015	19.0 x 1.5	19.0	16.0	68.0	Ø 25.0	700206			
DN020	23.0 x 1.5	23.0	20.0	68.0	Ø 50.5	700208			
DN025	29.0 x 1.5	29.0	26.0	76.0	Ø 50.5	700210			
DN032	35.0 x 1.5	35.0	32.0	76.0	Ø 50.5	700212			
DN040	41.0 x 1.5	41.0	38.0	76.0	Ø 64.0	700214			
DN050	53.0 x 1.5	53.0	50.0	76.0	Ø 77.5	700216			
DN065	70.0 x 2.0	70.0	66.0	96.0	Ø 91.0	700219			
DN080	85.0 x 2.0	85.0	81.0	96.0	Ø 106.0	700222			
DN100	104.0 x 2.0	104.0	100.0	96.0	Ø 119.0	700204			

ISO	Abmessung dimension	A	B	C	E	MB 1.4435			
DN008	13.5 x 1.6	13.5	10.3	68.0	Ø 25.0	700221			
DN010	17.2 x 1.6	17.2	14.0	68.0	Ø 25.0	700203			
DN015	21.3 x 1.6	21.3	18.1	68.0	Ø 50.5	700207			
DN020	26.9 x 1.6	26.9	23.7	68.0	Ø 50.5	700209			
DN025	33.7 x 2.0	33.7	29.7	76.0	Ø 50.5	700211			
DN032	42.4 x 2.0	42.4	38.4	76.0	Ø 50.5	700213			
DN040	48.3 x 2.0	48.3	44.3	76.0	Ø 64.0	700215			
DN050	60.3 x 2.0	60.3	56.3	76.0	Ø 77.5	700217			
DN065	76.1 x 2.0	76.1	72.1	96.0	Ø 91.0	700220			
DN080	88.9 x 2.3	88.9	84.3	96.0	Ø 106.0	700223			
DN100	114.3 x 2.3	114.3	109.7	96.0	Ø 130.0	700205			



## 2.5.2 Steril-Clampstutzen -VS- STERI-Connect®

aseptic clamp -VS-



zusätzliche Oberflächenqualitäten analog Seite | additional surface qualities analog page 42

weitere Abmessungen auf Anfrage | further dimensions on request

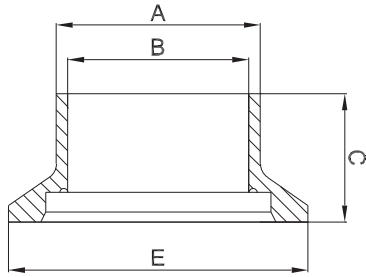
DIN	Abmessung dimension	A	B	C	E		MB 1.4435			
DN006	8.0 x 1.0	8.0	6.0	35.0	∅ 25.0		700196			
DN008	10.0 x 1.0	10.0	8.0	35.0	∅ 25.0		705241			
DN010	12.0 x 1.0	12.0	10.0	35.0	∅ 25.0		700180			
DN010	13.0 x 1.5	13.0	10.0	35.0	∅ 25.0		709768			
DN015	19.0 x 1.5	19.0	16.0	35.0	∅ 25.0		700184			
DN020	23.0 x 1.5	23.0	20.0	35.0	∅ 50.5		700186			
DN025	29.0 x 1.5	29.0	26.0	39.0	∅ 50.5		700188			
DN032	35.0 x 1.5	35.0	32.0	39.0	∅ 50.5		700190			
DN040	41.0 x 1.5	41.0	38.0	39.0	∅ 64.0		700192			
DN050	53.0 x 1.5	53.0	50.0	39.0	∅ 77.5		700194			
DN065	70.0 x 2.0	70.0	66.0	49.0	∅ 91.0		700197			
DN080	85.0 x 2.0	85.0	81.0	49.0	∅ 106.0		700200			
DN100	104.0 x 2.0	104.0	100.0	49.0	∅ 119.0		700182			

ISO	Abmessung dimension	A	B	C	E		MB 1.4435			
DN008	13.5 x 1.6	13.5	10.3	35.0	∅ 25.0		700199			
DN010	17.2 x 1.6	17.2	14.0	35.0	∅ 25.0		700181			
DN015	21.3 x 1.6	21.3	18.1	35.0	∅ 50.5		700185			
DN020	26.9 x 1.6	26.9	23.7	35.0	∅ 50.5		700187			
DN025	33.7 x 2.0	33.7	29.7	39.0	∅ 50.5		700189			
DN032	42.4 x 2.0	42.4	38.4	39.0	∅ 50.5		700191			
DN040	48.3 x 2.0	48.3	44.3	39.0	∅ 64.0		700193			
DN050	60.3 x 2.0	60.3	56.3	39.0	∅ 77.5		700195			
DN065	76.1 x 2.0	76.1	72.1	49.0	∅ 91.0		700198			
DN080	88.9 x 2.3	88.9	84.3	49.0	∅ 106.0		700201			
DN100	114.3 x 2.3	114.3	109.7	49.0	∅ 130.0		700183			



## 2.5.3 Steril-Clampstutzen -RS- STERI-Connect®

aseptic clamp -RS-



weitere Abmessungen auf Anfrage | further dimensions on request

zusätzliche Oberflächenqualitäten analog Seite | additional surface qualities analog page 42

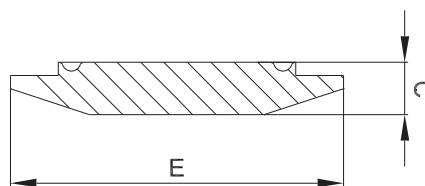
DIN	Abmessung dimension	A	B	C	E		MB 1.4435			
DN006	8.0 x 1.0	8.0	6.0	35.0	Ø 25.0		705242			
DN008	10.0 x 1.0	10.0	8.0	35.0	Ø 25.0		700174			
DN010	12.0 x 1.0	12.0	10.0	35.0	Ø 25.0		700158			
DN010	13.0 x 1.5	13.0	10.0	35.0	Ø 25.0		709768			
DN015	19.0 x 1.5	19.0	16.0	35.0	Ø 25.0		700162			
DN020	23.0 x 1.5	23.0	20.0	35.0	Ø 50.5		700164			
DN025	29.0 x 1.5	29.0	26.0	39.0	Ø 50.5		700166			
DN032	35.0 x 1.5	35.0	32.0	39.0	Ø 50.5		700168			
DN040	41.0 x 1.5	41.0	38.0	39.0	Ø 64.0		700170			
DN050	53.0 x 1.5	53.0	50.0	39.0	Ø 77.5		700172			
DN065	70.0 x 2.0	70.0	66.0	49.0	Ø 91.0		700175			
DN080	85.0 x 2.0	85.0	81.0	49.0	Ø 106.0		700178			
DN100	104.0 x 2.0	104.0	100.0	49.0	Ø 119.0		700160			

ISO	Abmessung dimension	A	B	C	E		MB 1.4435			
DN008	13.5 x 1.6	13.5	10.3	35.0	Ø 25.0		700177			
DN010	17.2 x 1.6	17.2	14.0	35.0	Ø 25.0		700159			
DN015	21.3 x 1.6	21.3	18.1	35.0	Ø 50.5		700163			
DN020	26.9 x 1.6	26.9	23.7	35.0	Ø 50.5		700165			
DN025	33.7 x 2.0	33.7	29.7	39.0	Ø 50.5		700167			
DN032	42.4 x 2.0	42.4	38.4	39.0	Ø 50.5		700169			
DN040	48.3 x 2.0	48.3	44.3	39.0	Ø 64.0		700171			
DN050	60.3 x 2.0	60.3	56.3	39.0	Ø 77.5		700173			
DN065	76.1 x 2.0	76.1	72.1	49.0	Ø 91.0		700176			
DN080	88.9 x 2.3	88.9	84.3	49.0	Ø 106.0		700179			
DN100	114.3 x 2.3	114.3	109.7	49.0	Ø 130.0		700161			



## 2.5.4 Steril-Blindclamps -VS- STERI-Connect®

aseptic blind clamp -VS-



zusätzliche Oberflächenqualitäten analog Seite | additional surface qualities analog page 42

weitere Abmessungen auf Anfrage | further dimensions on request

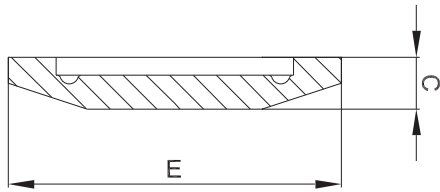
DIN	Abmessung dimension	C	E				MB 1.4435			
DN006	8.0 x 1.0	7.5	Ø 25.0				700154			
DN008	10.0 x 1.0	7.5	Ø 25.0				700156			
DN010	12.0 x 1.0	7.5	Ø 25.0				700146			
DN010	13.0 x 1.5	7.5	Ø 25.0				709840			
DN015	19.0 x 1.5	7.5	Ø 25.0				700148			
DN020	23.0 x 1.5	9.0	Ø 50.5				700149			
DN025	29.0 x 1.5	9.0	Ø 50.5				700150			
DN032	35.0 x 1.5	9.0	Ø 50.5				700151			
DN040	41.0 x 1.5	9.0	Ø 64.0				700152			
DN050	53.0 x 1.5	9.0	Ø 77.5				700153			
DN065	70.0 x 2.0	9.0	Ø 91.0				700155			
DN080	85.0 x 2.0	11.0	Ø 106.0				700157			
DN100	104.0 x 2.0	11.0	Ø 119.0				700147			

ISO	Abmessung dimension	C	E				MB 1.4435			
DN008	13.5 x 1.6	7.5	Ø 25.0				704971			
DN010	17.2 x 1.6	7.5	Ø 25.0				705281			
DN015	21.3 x 1.6	7.5	Ø 50.5				705282			
DN020	26.9 x 1.6	9.0	Ø 50.5				705283			
DN025	33.7 x 2.0	9.0	Ø 50.5				705284			
DN032	42.4 x 2.0	9.0	Ø 50.5				705285			
DN040	48.3 x 2.0	9.0	Ø 64.0				705286			
DN050	60.3 x 2.0	9.0	Ø 77.5				705287			
DN065	76.1 x 2.0	9.0	Ø 91.0				705288			
DN080	88.9 x 2.3	11.0	Ø 106.0				705289			
DN100	114.3 x 2.3	11.0	Ø 130.0				705290			



## 2.5.5 Steril-Blindclampstutzen -RS- STERI-Connect®

aseptic blind clamp -RS-



weitere Abmessungen auf Anfrage | further dimensions on request

zusätzliche Oberflächenqualitäten analog Seite | additional surface qualities analog page 42

DIN	Abmessung dimension	C	E				MB 1.4435			
DN006	8.0 x 1.0	7.5	Ø 25.0				700142			
DN008	10.0 x 1.0	7.5	Ø 25.0				700144			
DN010	12.0 x 1.0	7.5	Ø 25.0				700134			
DN010	13.0 x 1.5	7.5	Ø 25.0				709841			
DN015	19.0 x 1.5	7.5	Ø 25.0				700136			
DN020	23.0 x 1.5	9.0	Ø 50.5				700137			
DN025	29.0 x 1.5	9.0	Ø 50.5				700138			
DN032	35.0 x 1.5	9.0	Ø 50.5				700139			
DN040	41.0 x 1.5	9.0	Ø 64.0				700140			
DN050	53.0 x 1.5	9.0	Ø 77.5				700141			
DN065	70.0 x 2.0	9.0	Ø 91.0				700143			
DN080	85.0 x 2.0	11.0	Ø 106.0				700145			
DN100	104.0 x 2.0	11.0	Ø 119.0				700135			

ISO	Abmessung dimension	C	E				MB 1.4435			
DN008	13.5 x 1.6	7.5	Ø 25.0				704972			
DN010	17.2 x 1.6	7.5	Ø 25.0				704957			
DN015	21.3 x 1.6	7.5	Ø 50.5				703066			
DN020	26.9 x 1.6	9.0	Ø 50.5				705274			
DN025	33.7 x 2.0	9.0	Ø 50.5				705275			
DN032	42.4 x 2.0	9.0	Ø 50.5				705276			
DN040	48.3 x 2.0	9.0	Ø 64.0				705277			
DN050	60.3 x 2.0	9.0	Ø 77.5				703065			
DN065	76.1 x 2.0	9.0	Ø 91.0				705278			
DN080	88.9 x 2.3	11.0	Ø 106.0				705279			
DN100	114.3 x 2.3	11.0	Ø 130.0				705280			