



5.2 STERI-TK® / HQ-TK® DIN 11865-TK

Steril T-Stück -kurz/egal-

aseptic tee -short/equal-

Legende

- A Außendurchmesser
- B Innendurchmesser
- C Gesamtlänge
- D Länge Abgang

Abmessungen

- DIN 11866-A (DIN 11850)
- DIN 11866-B (EN ISO 1127)
- DIN 11866-C (ASME BPE)

Normative Verweisungen, Anforderungen / Abnahmen (Vormaterial)

- DIN 11865
- DIN 11866
- BN2
- EN 10088-1
- EN 10204
- ASTM A269 / A270
- ASME BPE
- ASME SA249/SA249M
- AD 2000-W2

Kennzeichnung

Hersteller, Werkstoff, Abmessung, Schmelze,
DIN 11865

Toleranzen (Bezugsnorm)

DIN 11865 / EN ISO 1127

Verpackung

Schweißenden mit Kunststoffkappen verschlossen,
einzeln verpackt.

Werkstoffe

1.4435

weitere Werkstoffe auf Anfrage

Oberflächenbeschaffenheit

	STERI line	MB H2 Ra > 0.8 µm	K400 H3o Ra < 0.8 µm	e-pol. HE3o Ra < 0.5-0.8 µm
innen metallblank				
innen geschliffen				
innen e-poliert				
außen metallblank				
außen geschliffen				

Key

- external diameter
- internal diameter
- total length
- length of the branch

Dimensions

- DIN 11866-A (DIN 11850)
- DIN 11866-B (EN ISO 1127)
- DIN 11866-C (ASME BPE)

Normative References, Requirements / Approvals (raw material)

- DIN 11865
- DIN 11866
- BN2
- EN 10088-1
- EN 10204
- ASTM A269 / A270
- ASME BPE
- ASME SA249/SA249M
- AD 2000-W2

Marking

manufacturer, material, dimension, heat,
DIN 11865

Tolerances (reference standard)

DIN 11865 / EN ISO 1127

Packaging

Welding ends covered with plastic caps,
wrapped separately.

Materials

316L

further materials on request

Surface condition

	HQ line	K400 H4o Ra < 0.4 µm	e-pol. HE5o Ra < 0.25 µm
inside bright finish			
inside mech. polished			
inside e-polished			
outside bright finish			
outside mech. polished			

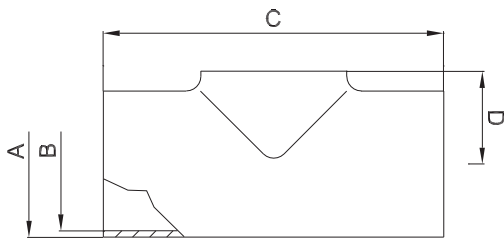


Oberflächenqualitäten | surface qualities

Innenoberfläche internal surface finish	(Zusatz-) Artikel-Nr. (additional) order No
Ra < 0.6 µm (STERI-line®)	999279
Ra < 0.5 µm (STERI-line®)	999280
Ra < 0.4 µm (HQ-line®)	999281
Ra < 0.25 µm (HQ-line®)	999283

Bestellbeispiel | ordering example

Artikelbezeichnung + Ausführungen article description + variants	Artikel-Nr. order No
HQ-TK® DN025 ISO (1.4435) DIN 11865-TK aseptic tee -short/equal-	707104
geschliffen K400 mech. polished	
Ra < 0.4 µm	



weitere Abmessungen auf Anfrage | further dimensions on request

DIN	Abmessung dimension	A	B	C	D	STERI-line®			HQ-line®	
						MB	K400	e-pol.	K400	e-pol.
DN010*	12.0 x 1.0	12.0	10.0	70.0	7.5	706878	708125	708135	707078	707079
DN010	13.0 x 1.5	XXX	XXX	XXX	XXX	XXX	XXX	XXX	XXX	XXX
DN015	19.0 x 1.5	19.0	16.0	70.0	11.0	702703	708126	708136	707080	707081
DN020	23.0 x 1.5	23.0	20.0	80.0	13.0	702705	708127	708137	707082	707083
DN025	29.0 x 1.5	29.0	26.0	100.0	16.0	702707	708128	708138	707084	707085
DN032	35.0 x 1.5	35.0	32.0	110.0	19.5	702709	708129	708139	707086	707087
DN040	41.0 x 1.5	41.0	38.0	120.0	23.0	702711	708130	708140	707088	707089
DN050	53.0 x 1.5	53.0	50.0	160.0	30.0	702713	708131	708141	707090	707091
DN065	70.0 x 2.0	70.0	66.0	210.0	40.0	702715	708132	708142	707092	707093
DN080	85.0 x 2.0	85.0	81.0	260.0	47.5	702717	708133	708143	707094	707095
DN100	104.0 x 2.0	104.0	100.0	310.0	58.0	702719	708134	708144	707096	707097
DN125	129.0 x 2.0	129.0	125.0	375.0	74.0	702721	711310	711311	**	**
DN150	154.0 x 2.0	154.0	150.0	450.0	90.0	702723	711312	711313	**	**
DN200	204.0 x 2.0	204.0	200.0	600.0	115.0	711314	711315	711316	**	**

ISO	Abmessung dimension	A	B	C	D	STERI-line®			HQ-line®	
						MB	K400	e-pol.	K400	e-pol.
DN008	13.5 x 1.6	XXX	XXX	XXX	XXX	XXX	XXX	XXX	XXX	XXX
DN010	17.2 x 1.6	17.2	14.0	68.0	10.1	702702	708145	708155	707098	707099
DN015	21.3 x 1.6	21.3	18.1	72.0	12.2	702704	708146	708156	707100	707101
DN020	26.9 x 1.6	26.9	23.7	110.0	15.0	702706	708147	708157	707102	707103
DN025	33.7 x 2.0	33.7	29.7	120.0	18.4	702708	708148	708158	707104	707105
DN032	42.4 x 2.0	42.4	38.4	130.0	23.2	702710	708149	708159	707106	707107
DN040	48.3 x 2.0	48.3	44.3	130.0	26.7	702712	708150	708160	707108	707109
DN050	60.3 x 2.0	60.3	56.3	180.0	33.7	702714	708151	708161	707110	707111
DN065	76.1 x 2.0	76.1	72.1	220.0	43.1	702716	708152	708162	707112	707113
DN080	88.9 x 2.3	88.9	84.3	260.0	49.5	702718	708153	708163	707114	707115
DN100	114.3 x 2.3	114.3	109.7	320.0	63.2	702720	708154	708164	707116	707117
DN125	139.7 x 2.6	139.7	134.5	400.0	79.9	702722	711317	708992	**	**
DN150	168.3 x 2.6	168.3	163.1	500.0	97.2	702724	711318	711319	**	**
DN200	219.1 x 2.6	219.1	213.9	600.0	123.6	**	**	**	**	**

ASME BPE	Abmessung dimension	A	B	C	D	STERI-line®			HQ-line®	
						MB	K400	e-pol.	K400	e-pol.
DN 1/2"	12.7 x 1.65	XXX	XXX	XXX	XXX	XXX	XXX	XXX	XXX	XXX
DN 3/4"	19.05 x 1.65	19.05	15.75	101.6	11.0	702731	708165	708172	707118	707119
DN 1"	25.4 x 1.65	25.4	22.1	108.0	14.2	702725	708166	708173	707120	707121
DN 1 1/2"	38.1 x 1.65	38.1	34.8	120.6	21.1	702726	708167	708174	707122	707123
DN 2"	50.8 x 1.65	50.8	47.5	146.0	28.9	702728	708168	708175	707124	707125
DN 2 1/2"	63.5 x 1.65	63.5	60.2	158.8	35.3	702729	708169	708176	707126	707127
DN 3"	76.2 x 1.65	76.2	72.9	171.4	43.1	702730	708170	708177	707128	707129
DN 4"	101.6 x 2.11	101.6	97.38	209.6	56.8	704993	708171	708178	707130	707131
DN 6"	152.4 x 2.77	152.4	146.86	285.8	90.1	**	**	**	**	**

*) nicht in der DIN-Norm enthalten | non-standard

***) auf Anfrage | on request