



### 5.3 STERI-TR® / HQ-TR® DIN 11865-T

Steril T-Stück -lang/reduziert-

aseptic tee -long/reduced-

#### Legende

- A Außendurchmesser (Durchgang)
- B Innendurchmesser (Durchgang)
- A1 Außendurchmesser (Abzweig)
- B1 Innendurchmesser (Abzweig)
- C Gesamtlänge
- D Länge Abgang

#### Abmessungen

- DIN 11866-A (DIN 11850)
- DIN 11866-B (EN ISO 1127)
- DIN 11866-C (ASME BPE)

#### Normative Verweisungen, Anforderungen / Abnahmen (Vormaterial)

- DIN 11865
- DIN 11866
- BN2
- EN 10088-1
- EN 10204
- ASTM A269 / A270
- ASME BPE
- ASME SA249/SA249M
- AD 2000-W2

#### Kennzeichnung

Hersteller, Werkstoff, Abmessung, Schmelze, DIN 11865

#### Toleranzen (Bezugsnorm)

DIN 11865 / EN ISO 1127

#### Verpackung

Schweißenden mit Kunststoffkappen verschlossen, einzeln verpackt.

#### Werkstoffe

1.4435

#### weitere Werkstoffe auf Anfrage

#### Oberflächenbeschaffenheit

	STERI-line MB   H2 Ra > 0.8 µm	K400   H3o Ra < 0.8 µm	e-pol.   HE3o Ra < 0.5-0.8 µm
innen metallblank			
innen geschliffen			
innen e-poliert			
außen metallblank			
außen geschliffen			

#### Key

- external diameter (main tube)
- internal diameter (main tube)
- external diameter (branch)
- internal diameter (branch)
- total length
- length of the branch

#### Dimensions

- DIN 11866-A (DIN 11850)
- DIN 11866-B (EN ISO 1127)
- DIN 11866-C (ASME BPE)

#### Normative References, Requirements / Approvals (raw material)

- DIN 11865
- DIN 11866
- BN2
- EN 10088-1
- EN 10204
- ASTM A269 / A270
- ASME BPE
- ASME SA249/SA249M
- AD 2000-W2

#### Marking

manufacturer, material, dimension, heat, DIN 11865

#### Tolerances (reference standard)

DIN 11865 / EN ISO 1127

#### Packaging

Welding ends covered with plastic caps, wrapped separately.

#### Materials

316L

#### further materials on request

#### Surface condition

	HQ-line K400   H4o Ra < 0.4 µm	e-pol.   HE5o Ra < 0.25 µm
inside bright finish		
inside mech. polished		
inside e-polished		
outside bright finish		
outside mech. polished		

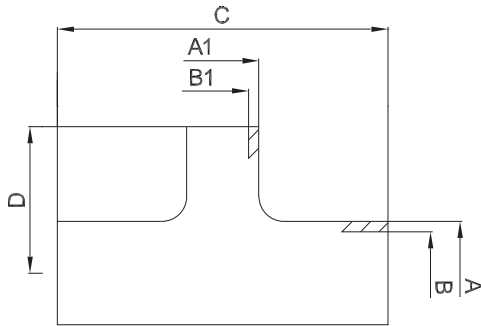


#### Oberflächenqualitäten | surface qualities

Innenoberfläche internal surface finish	(Zusatz-) Artikel-Nr. (additional) order No
Ra < 0.6 µm (STERI-line®)	999279
Ra < 0.5 µm (STERI-line®)	999280
Ra < 0.4 µm (HQ-line®)	999281
Ra < 0.25 µm (HQ-line®)	999283

#### Bestellbeispiel | ordering example

Artikelbezeichnung + Ausführungen article description + variants	Artikel-Nr. order No
STERI-TR® DN025/DN015 DIN (1.4435) aseptic tee -long/reduced- DIN 11865-T	702204
e-poliert   e-polished	
Ra < 0.5 µm	+ 999280



weitere Abmessungen auf Anfrage | further dimensions on request

DIN	A	B	A1	B1	C	D	STERI-line®			HQ-line®
							MB	K400	e-pol.	
DN006/DN004*	8.0	6.0	6.0	4.0	60.0	30.0	711320	708490	711321	**
DN008/DN004*	10.0	8.0	6.0	4.0	60.0	30.0	711322	708491	711323	**
DN008/DN006	10.0	8.0	8.0	6.0	60.0	30.0	711324	708492	711325	**
DN010/DN006*	12.0	10.0	8.0	6.0	60.0	30.0	711326	706045	711327	**
DN010/DN006	13.0	10.0	8.0	6.0	60.0	30.0	711328	711329	711330	**
DN010/DN008*	12.0	10.0	10.0	8.0	60.0	30.0	711331	711332	711333	**
DN010/DN008	13.0	10.0	10.0	8.0	60.0	30.0	711334	711335	711336	**
DN015/DN006*	19.0	16.0	8.0	6.0	70.0	35.0	711337	708513	711338	**
DN015/DN008	19.0	16.0	10.0	8.0	70.0	35.0	711339	711340	711341	**
DN015/DN010*	19.0	16.0	12.0	10.0	70.0	35.0	705775	705776	705777	**
DN015/DN010	19.0	16.0	13.0	10.0	70.0	35.0	700527	701252	701253	**
DN020/DN010*	23.0	20.0	12.0	10.0	80.0	40.0	700531	701260	701261	**
DN020/DN010	23.0	20.0	13.0	10.0	80.0	40.0	706355	706356	706357	**
DN020/DN015	23.0	20.0	19.0	16.0	80.0	40.0	700533	701264	701265	**
DN025/DN010*	29.0	26.0	12.0	10.0	100.0	50.0	700535	702196	701269	**
DN025/DN010*	29.0	26.0	13.0	10.0	100.0	50.0	706359	706361	706360	**
DN025/DN015	29.0	26.0	19.0	16.0	100.0	50.0	702194	701268	702204	**
DN025/DN020	29.0	26.0	23.0	20.0	100.0	50.0	702245	702244	702246	**
DN032/DN010*	35.0	32.0	12.0	10.0	110.0	55.0	700537	701272	701273	**
DN032/DN010*	35.0	32.0	13.0	10.0	110.0	55.0	706363	706364	706365	**
DN032/DN015	35.0	32.0	19.0	16.0	110.0	55.0	702247	702254	702255	**
DN032/DN020	35.0	32.0	23.0	20.0	110.0	55.0	702250	702249	702248	**
DN032/DN025	35.0	32.0	29.0	26.0	110.0	55.0	702253	702251	702252	**
DN040/DN010*	41.0	38.0	12.0	10.0	120.0	60.0	702600	702601	702602	**
DN040/DN010*	41.0	38.0	13.0	10.0	120.0	60.0	706367	706368	706369	**
DN040/DN015*	41.0	38.0	19.0	16.0	120.0	60.0	700539	701276	701277	**
DN040/DN020	41.0	38.0	23.0	20.0	120.0	60.0	702280	702282	702281	**
DN040/DN025	41.0	38.0	29.0	26.0	120.0	60.0	702285	702283	702284	**
DN040/DN032	41.0	38.0	35.0	32.0	120.0	60.0	702286	702288	702287	**
DN050/DN010*	53.0	50.0	12.0	10.0	160.0	80.0	702936	702938	702937	**
DN050/DN010*	53.0	50.0	13.0	10.0	160.0	80.0	706371	706373	706372	**
DN050/DN015*	53.0	50.0	19.0	16.0	160.0	80.0	700541	701280	701281	**
DN050/DN020*	53.0	50.0	23.0	20.0	160.0	80.0	702289	702290	702291	**
DN050/DN025	53.0	50.0	29.0	26.0	160.0	80.0	702294	702293	702292	**
DN050/DN032	53.0	50.0	35.0	32.0	160.0	80.0	702296	702297	702298	**
DN050/DN040	53.0	50.0	41.0	38.0	160.0	80.0	702301	702300	702299	**
DN065/DN010*	70.0	66.0	13.0	10.0	210.0	80.0	711342	711343	711344	**
DN065/DN015*	70.0	66.0	19.0	16.0	210.0	80.0	711345	708017	707979	**
DN065/DN020*	70.0	66.0	23.0	20.0	210.0	80.0	700543	701284	701285	**
DN065/DN025*	70.0	66.0	29.0	26.0	210.0	80.0	702330	702332	702331	**
DN065/DN032	70.0	66.0	35.0	32.0	210.0	80.0	702334	702333	702335	**
DN065/DN040	70.0	66.0	41.0	38.0	210.0	80.0	702336	702338	702337	**

\*) nicht in der DIN-Norm enthalten | non-standard

\*\*) auf Anfrage | on request



### 5.3 STERI-TR® / HQ-TR® DIN 11865-T

zusätzliche Oberflächenqualitäten analog Seite | additional surface qualities analog page 113

DIN	A	B	A1	B1	C	D	STERI-line®			HQ-line®
							MB	K400	e-pol.	
DN065/DN050	70.0	66.0	53.0	50.0	210.0	80.0	702341	702339	702340	**
DN080/DN010*	85.0	81.0	13.0	10.0	260.0	105.0	711346	709290	709291	**
DN080/DN015*	85.0	81.0	19.0	16.0	260.0	105.0	711347	705630	711348	**
DN080/DN020*	85.0	81.0	23.0	20.0	260.0	105.0	711349	711350	711351	**
DN080/DN025*	85.0	81.0	29.0	26.0	260.0	105.0	702853	709538	709539	**
DN080/DN032*	85.0	81.0	35.0	32.0	260.0	105.0	700545	701288	701289	**
DN080/DN040	85.0	81.0	41.0	38.0	260.0	105.0	702342	702343	702344	**
DN080/DN050	85.0	81.0	53.0	50.0	260.0	105.0	702347	702346	702345	**
DN080/DN065	85.0	81.0	70.0	66.0	260.0	105.0	702348	702349	702350	**
DN100/DN010*	104.0	100.0	13.0	10.0	310.0	130.0	711352	709294	709295	**
DN100/DN015*	104.0	100.0	19.0	16.0	310.0	130.0	704930	704931	711353	**
DN100/DN020*	104.0	100.0	23.0	20.0	310.0	130.0	700529	702214	702185	**
DN100/DN025*	104.0	100.0	29.0	26.0	310.0	130.0	702216	701256	702215	**
DN100/DN032*	104.0	100.0	35.0	32.0	310.0	130.0	702201	702203	702202	**
DN100/DN040*	104.0	100.0	41.0	38.0	310.0	130.0	702205	702206	702207	**
DN100/DN050	104.0	100.0	53.0	50.0	310.0	130.0	702182	702208	702209	**
DN100/DN065	104.0	100.0	70.0	66.0	310.0	130.0	702210	702211	702186	**
DN100/DN080	104.0	100.0	85.0	81.0	310.0	130.0	702212	702213	701257	**
DN125/DN065	129.0	125.0	70.0	66.0	375.0	155.0	711354	711355	711356	**
DN125/DN080	129.0	125.0	85.0	81.0	375.0	155.0	711357	711358	711359	**
DN125/DN100	129.0	125.0	104.0	100.0	375.0	155.0	711360	711361	711362	**
DN150/DN080	154.0	150.0	85.0	81.0	450.0	187.5	711363	711364	711365	**
DN150/DN100	154.0	150.0	104.0	100.0	450.0	187.5	711366	711367	711368	**
DN150/DN125	154.0	150.0	129.0	125.0	450.0	187.5	711369	711370	711371	**
DN200/DN100	204.0	200.0	104.0	100.0	600.0	225.0	711372	711373	711374	**
DN200/DN125	204.0	200.0	129.0	125.0	600.0	225.0	711375	711376	711377	**
DN200/DN150	204.0	200.0	154.0	150.0	600.0	225.0	711378	711379	711380	**

\*) nicht in der DIN-Norm enthalten | non-standard

\*\*) auf Anfrage | on request

ISO	A	B	A1	B1	C	D	STERI-line®			HQ-line®
							MB	K400	e-pol.	
DN010/DN008	17.2	14.0	13.5	10.3	68.0	34.0	700530	702198	702197	**
DN015/DN008	21.3	18.1	13.5	10.3	72.0	36.0	700532	701262	701263	**
DN015/DN010	21.3	18.1	17.2	14.0	72.0	36.0	700528	701254	701255	**
DN020/DN008	26.9	23.7	13.5	10.3	110.0	55.0	700534	701266	701267	**
DN020/DN010	26.9	23.7	17.2	14.0	110.0	55.0	702229	702230	702231	**
DN020/DN015	26.9	23.7	21.3	18.1	110.0	55.0	702234	702233	702232	**
DN025/DN008*	33.7	29.7	13.5	10.3	120.0	60.0	700536	701270	701271	**
DN025/DN010	33.7	29.7	17.2	14.0	120.0	60.0	702235	702236	702237	**
DN025/DN015	33.7	29.7	21.3	18.1	120.0	60.0	702240	702239	702238	**
DN025/DN020	33.7	29.7	26.9	23.7	120.0	60.0	702241	702242	702243	**
DN032/DN008*	42.4	38.4	13.5	10.3	130.0	65.0	700538	701274	701275	**
DN032/DN010*	42.4	38.4	17.2	14.0	130.0	65.0	702256	702258	702257	**
DN032/DN015	42.4	38.4	21.3	18.1	130.0	65.0	702261	702259	702260	**
DN032/DN020	42.4	38.4	26.9	23.7	130.0	65.0	702262	702263	702264	**
DN032/DN025	42.4	38.4	33.7	29.7	130.0	65.0	702265	702267	702266	**
DN040/DN008*	48.3	44.3	13.5	10.3	130.0	65.0	704026	706270	708662	**
DN040/DN010*	48.3	44.3	17.2	14.0	130.0	65.0	702279	701278	701279	**
DN040/DN015*	48.3	44.3	21.3	18.1	130.0	65.0	702268	702270	702269	**
DN040/DN020	48.3	44.3	26.9	23.7	130.0	65.0	702273	702271	702272	**
DN040/DN025	48.3	44.3	33.7	29.7	130.0	65.0	702274	702276	702275	**
DN040/DN032	48.3	44.3	42.4	38.4	130.0	65.0	700540	702277	702278	**
DN050/DN008*	60.3	56.3	13.5	10.3	180.0	90.0	704944	708228	713547	**
DN050/DN010*	60.3	56.3	17.2	14.0	180.0	90.0	703018	711582	709174	**
DN050/DN015*	60.3	56.3	21.3	18.1	180.0	90.0	700542	701282	701283	**



ISO	A	B	A1	B1	C	D	STERI-line®			HQ-line®
							MB	K400	e-pol.	
DN050/DN020*	60.3	56.3	26.9	23.7	180.0	90.0	702303	702304	702305	**
DN050/DN025	60.3	56.3	33.7	29.7	180.0	90.0	702308	702307	702306	**
DN050/DN032	60.3	56.3	42.4	38.4	180.0	90.0	702309	702310	702311	**
DN050/DN040	60.3	56.3	48.3	44.3	180.0	90.0	702314	702313	702312	**
DN065/DN008*	76.1	72.1	13.5	10.3	220.0	90.0	708650	708651	708652	**
DN065/DN010*	76.1	72.1	17.2	14.0	220.0	90.0	708653	708654	708655	**
DN065/DN015*	76.1	72.1	21.3	18.1	220.0	90.0	700544	701286	701287	**
DN065/DN020*	76.1	72.1	26.9	23.7	220.0	90.0	702315	702317	702316	**
DN065/DN025*	76.1	72.1	33.7	29.7	220.0	90.0	702320	702318	702319	**
DN065/DN032	76.1	72.1	42.4	38.4	220.0	90.0	702321	702323	702322	**
DN065/DN040	76.1	72.1	48.3	44.3	220.0	90.0	702324	702328	702326	**
DN065/DN050	76.1	72.1	60.3	56.3	220.0	90.0	702325	702329	702327	**
DN080/DN008*	88.9	84.3	13.5	10.3	260.0	110.0	711722	708026	711723	**
DN080/DN010*	88.9	84.3	17.2	14.0	260.0	110.0	711724	706015	711725	**
DN080/DN015*	88.9	84.3	21.3	18.1	260.0	110.0	711726	705623	711727	**
DN080/DN020*	88.9	84.3	26.9	23.7	260.0	110.0	711728	705055	711729	**
DN080/DN025*	88.9	84.3	33.7	29.7	260.0	110.0	700546	701290	701291	**
DN080/DN032*	88.9	84.3	42.4	38.4	260.0	110.0	702351	702353	702352	**
DN080/DN040	88.9	84.3	48.3	44.3	260.0	110.0	702362	702354	702355	**
DN080/DN050	88.9	84.3	60.3	56.3	260.0	110.0	702358	702357	702356	**
DN080/DN065	88.9	84.3	76.1	72.1	260.0	110.0	702359	702361	702360	**
DN100/DN008*	114.3	109.7	13.5	10.3	320.0	130.0	711730	711731	711732	**
DN100/DN010*	114.3	109.7	17.2	14.0	320.0	130.0	710562	710563	710564	**
DN100/DN015*	114.3	109.7	21.3	18.1	320.0	130.0	710565	710566	710567	**
DN100/DN020*	114.3	109.7	26.9	23.7	320.0	130.0	710568	710569	710570	**
DN100/DN025*	114.3	109.7	33.7	29.7	320.0	130.0	702200	702187	702227	**
DN100/DN032*	114.3	109.7	42.4	38.4	320.0	130.0	702222	701258	702228	**
DN100/DN040*	114.3	109.7	48.3	44.3	320.0	130.0	702219	702217	702218	**
DN100/DN050	114.3	109.7	60.3	56.3	320.0	130.0	702183	702220	702221	**
DN100/DN065	114.3	109.7	76.1	72.1	320.0	130.0	702224	702223	702188	**
DN100/DN080	114.3	109.7	88.9	84.3	320.0	130.0	702226	702225	701259	**
DN125/DN065	139.7	134.5	76.1	72.1	400.0	160.0	711733	711734	711735	**
DN125/DN080	139.7	134.5	88.9	84.3	400.0	160.0	711736	711737	711738	**
DN125/DN100	139.7	134.5	114.3	109.7	400.0	160.0	711739	711740	711741	**
DN150/DN080	168.3	163.1	88.9	84.3	500.0	200.0	711742	711743	711744	**
DN150/DN100	168.3	163.1	114.3	109.7	500.0	200.0	704428	711745	711746	**
DN150/DN125	168.3	163.1	139.7	134.5	500.0	200.0	711747	711748	711749	**
DN200/DN100	219.1	213.9	114.3	109.7	600.0	250.0	711750	711751	711752	**
DN200/DN125	219.1	213.9	139.7	134.5	600.0	250.0	711753	711754	711755	**
DN200/DN150	219.1	213.9	168.3	163.1	600.0	250.0	711756	711757	711758	**

\*) nicht in der DIN-Norm enthalten | non-standard

\*\*) auf Anfrage | on request



### 5.3 STERI-TR® / HQ-TR® DIN 11865-T

zusätzliche Oberflächenqualitäten analog Seite | additional surface qualities analog page 113

ASME BPE	A	B	A1	B1	C	D	STERI-line®			HQ-line®
							MB	K400	e-pol.	
DN 3/8"/DN 1/4"	9.53	7.75	6.35	4.57	89.0	44.5	711759	711760	711761	**
DN 1/2"/DN 1/4"	12.7	9.4	6.35	4.57	95.2	47.6	711762	711763	711764	**
DN 1/2"/DN 3/8"	12.7	9.4	9.53	7.75	95.2	47.6	711765	711766	711767	**
DN 3/4"/DN 3/8"	19.05	15.75	9.53	7.75	101.6	50.8	711768	711769	711770	**
DN 3/4"/DN 1/2"	19.05	15.75	12.7	9.4	101.6	50.8	703475	705789	705790	**
DN 1"/DN 3/8"*	25.4	22.1	9.53	7.75	108.0	54.0	709300	711771	711772	**
DN 1"/DN 1/2"	25.4	22.1	12.7	9.4	108.0	54.0	705791	704422	705674	**
DN 1"/DN 3/4"	25.4	22.1	19.05	15.75	108.0	54.0	705792	705707	705678	**
DN 1 1/2"/DN 1/2"*	38.1	34.8	12.7	9.4	120.6	60.3	702811	704419	705793	**
DN 1 1/2"/DN 3/4"	38.1	34.8	19.05	15.75	120.6	60.3	704437	705794	705679	**
DN 1 1/2"/DN 1"	38.1	34.8	25.4	22.1	120.6	60.3	702815	705795	705680	**
DN 2"/DN 1/2"*	50.8	47.5	12.7	9.4	146.0	66.7	705643	709502	711773	**
DN 2"/DN 3/4"*	50.8	47.5	19.05	15.75	146.0	66.7	704485	705796	705706	**
DN 2"/DN 1"	50.8	47.5	25.4	22.1	146.0	66.7	702817	705797	705681	**
DN 2"/DN 1 1/2"	50.8	47.5	38.1	34.8	146.0	66.7	702813	705798	705705	**
DN 2 1/2"/DN 1/2"*	63.5	60.2	12.7	9.4	158.8	73.0	705644	705799	705800	**
DN 2 1/2"/DN 3/4"*	63.5	60.2	19.05	15.75	158.8	73.0	705645	705801	705802	**
DN 2 1/2"/DN 1"*	63.5	60.2	25.4	22.1	158.8	73.0	705803	705804	705682	**
DN 2 1/2"/DN 1 1/2"	63.5	60.2	38.1	34.8	158.8	73.0	705805	705806	705683	**
DN 2 1/2"/DN 2"	63.5	60.2	50.8	47.5	158.8	73.0	705807	705808	705684	**
DN 3"/DN 1 1/2"	76.2	72.9	38.1	34.8	171.4	79.4	705809	705810	705811	**
DN 3"/DN 2"	76.2	72.9	50.8	47.5	171.4	79.4	705812	705813	705814	**
DN 3"/DN 2 1/2"	76.2	72.9	63.5	60.2	171.4	79.4	705815	705816	705817	**
DN 4"/DN 2"	101.6	97.38	50.8	47.5	209.6	98.4	705818	705819	705820	**
DN 4"/DN 2 1/2"	101.6	97.38	63.5	60.2	209.6	98.4	705821	705822	705823	**
DN 4"/DN 3"	101.6	97.38	76.2	72.9	209.6	98.4	705824	705825	705826	**
DN 6"/DN 4"	152.4	146.86	101.6	97.38	285.8	130.2	711774	711775	711776	**

\*) nicht in der DIN-Norm enthalten | non-standard

\*\*) auf Anfrage | on request